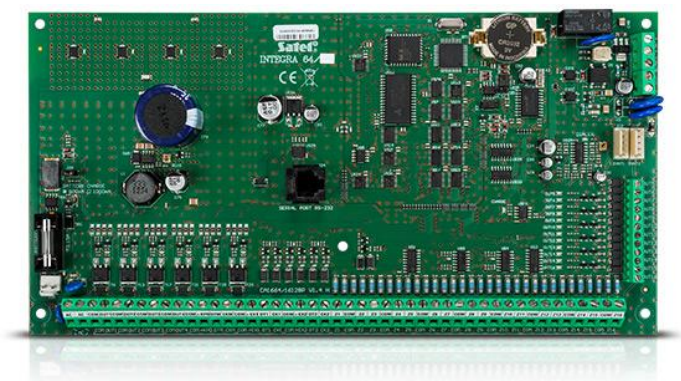


INTEGRA 64

Advanced alarm control units providing alarm functions and optional implementation of home automation and access control systems. With a broad range of extension modules, their applications can be adapted to individual needs: from minor systems to extensive installations. Communication features combined with additional modules, such as GSM and TCP/IP, are a major advantage of the **INTEGRA** control units.

- 16 up to 64 zones
- 32 partitions, 8 objects
- 16 up to 64 programmable outputs
- keypads and expansion modules buses
- built-in telephone dialer with monitoring, voice messaging and remote control features
- access control and home automation features
- system operation with LCD keypads, partition keypads, keyfobs and proximity cards or remotely with mobile phone or PC
- 64 independent timers for automatic control
- event log with 5887 entries and event printing feature
- 192+8+1 users
- RS-232 port – RJ type socket
- flash firmware upgrade with a PC
- built-in 3 A switching mode backup power supply with battery charging and diagnostic features
- option of not reporting possible problems with connecting to the SATEL server as a failure



Environmental class	II
Protection class	S
Max. battery capacity	24
Control panels	13,8
Low current programmable outputs rating	50
High current programmable outputs rating	3000
Power supply rating	3
Board dimensions	264 x 134
Operating temperature range	-10...+55 °C
Main board supply voltage (±15%)	20 V AC, 50-60 Hz
Standby mode current consumption	149
Max. current consumption	337